

## ***Upper Crossing Site Field Investigations, 2010***

*Session 1A (June 6-June 11)*

*Session 1B (June 13-June 18)*

*Session 2 (August 15-August 20)*

This season, PCRG will spend three weeks working at the Upper Crossing site. During Session 1 we will investigate Middle and Late Archaic deposits first encountered in 2009. Participants may sign up for either or both weeks of work. Session 2 will be devoted to mapping Late Prehistoric stone enclosures at several sites in the middle Saguache Creek valley. We encourage participants to arrive for their work session on Sunday and work through the week, although shorter stays are possible. We will camp at a Forest Service bunkhouse that is equipped with a kitchen and shower. Limited space (without hookups) is also available for trailers or small RVs.

### **Project Schedule**

#### *Session 1: Excavation*

The first session includes two weeks of work. Participants may sign up for either or both weeks. You are invited to arrive any time in the afternoon or early evening of the Sunday prior to your work session to set up camp and explore the area. Dinner will be served about 6:30PM. Fieldwork will begin Monday morning and continue through Friday afternoon. Dinner will be served on Friday night and you are welcome to stay through Saturday morning if you wish. We hope that you will be able to join us for an entire week of work, but ask that you commit to at least three days.

#### Session 1A

Date	Activities	Meals Provided
Sunday, June 6	Arrive afternoon or evening; set up camp; hike	Dinner
Monday, June 7	Orientation; excavation and documentation	All
Tuesday, June 8	Excavation and documentation	All
Wednesday, June 9	Excavation and documentation	All
Thursday, June 10	Excavation and documentation	All
Friday, June 11	Excavation and documentation	All
Saturday, June 12	Depart before noon	Breakfast

#### Session 1B

Date	Activities	Meals Provided
Sunday, June 13	Arrive afternoon or evening; set up camp; hike	Dinner
Monday, June 14	Orientation; excavation and documentation	All
Tuesday, June 15	Excavation and documentation	All
Wednesday, June 16	Excavation and documentation	All
Thursday, June 17	Excavation and documentation; profiles	All
Friday, June 18	Profiles and backfilling	All
Saturday, June 19	Depart before noon	Breakfast

## Session 2: Stone Structure Recording

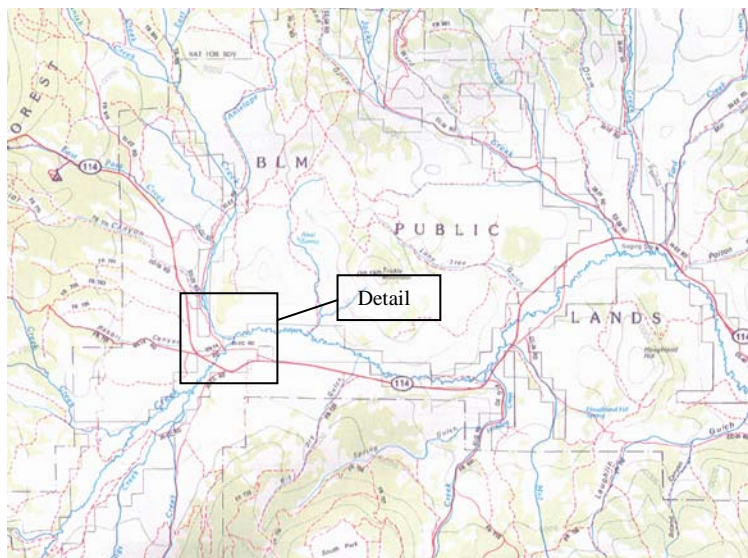
Session 2 will be one week long. You are invited to arrive any time in the afternoon or early evening of August 15 to set up camp and explore the area. Dinner will be served about 6:30PM. Fieldwork will begin Monday morning and continue through Friday afternoon. Dinner will be served on Friday night and you are welcome to stay through Saturday morning if you wish. We hope that you will be able to join us for the entire week, but ask that you commit to at least three days.

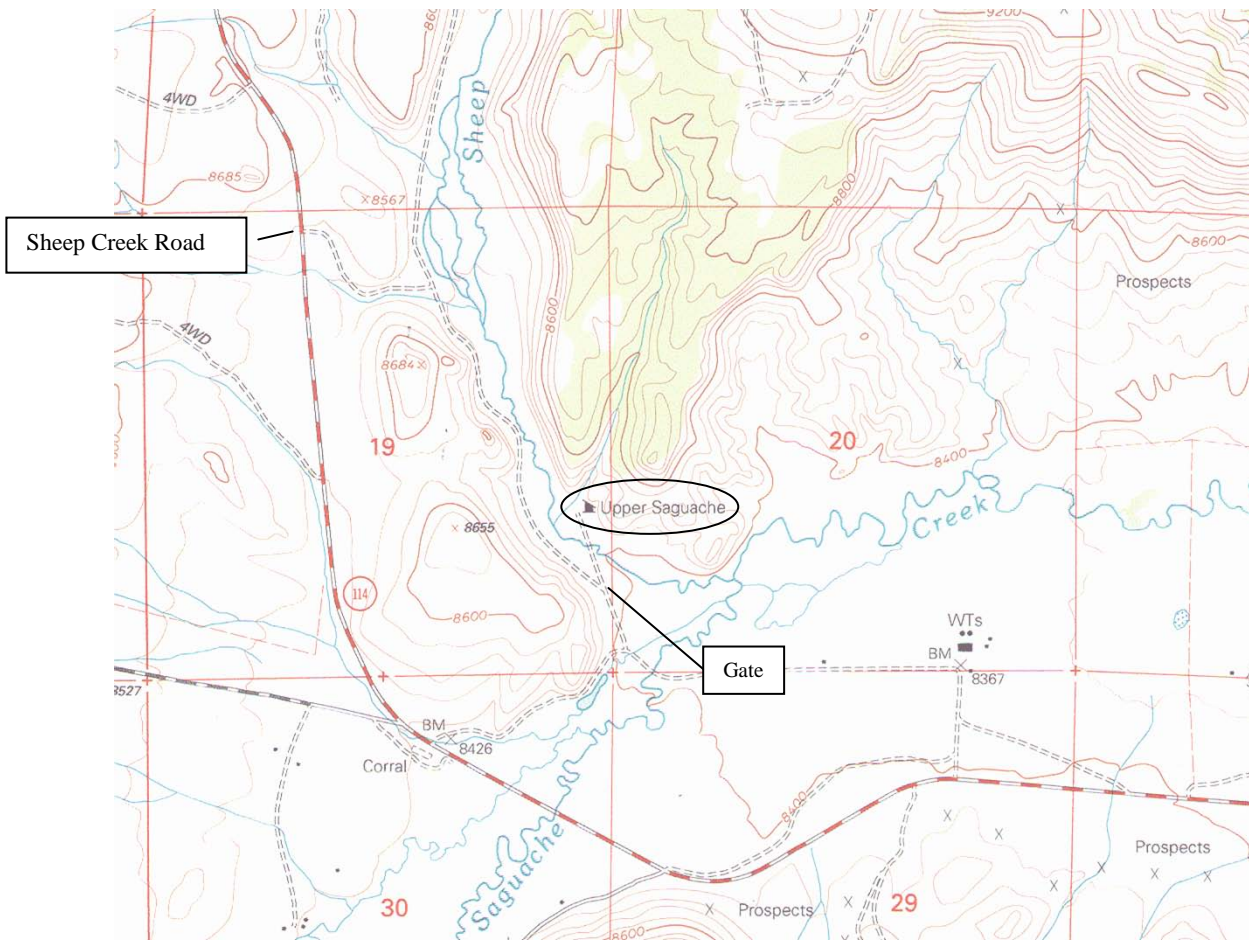
### Session 2

Date	Activities	Meals Provided
Sunday, August 15	Arrive afternoon or evening; set up camp; hike	Dinner
Monday, August 16	Orientation; mapping and documentation	All
Tuesday, August 17	Mapping and documentation	All
Wednesday, August 18	Mapping and documentation	All
Thursday, August 19	Mapping and documentation	All
Friday, August 20	Mapping (AM); forms check-in (PM)	All
Saturday, August 21	Depart before noon	Breakfast

### **Location and Access**

The base camp is located 20 miles west of Saguache on U.S. Highway 114, the Cochetopa Pass road. If you are traveling west, turn right on Sheep Creek Road, about 1.25 mile after Highway 114 crosses Saguache Creek. At the T intersection, turn right (south). The camp area will be located on your left, on the north site of Sheep Creek. The access road is graded and a high-clearance vehicle is not necessary.





### **Lodging**

Project participants will be staying at the Upper Crossing Guard Station, a Forest Service administrative facility. The guard station has a kitchen, restrooms and showers, and limited bunk space. Because the group will be large, participants should plan to camp adjacent to the guard station. The guard station is at 8500 ft, so it likely will be cool at night. There is space for small trailers, but no hookups are available.

### **Meals**

PCRG will provide meals for volunteers. Please tell us about any dietary restrictions you may have. Volunteers are encouraged to bring their favorite snacks and evening refreshments. During Session 1 meals will not be provided between breakfast on Saturday, June 12 and dinner on Sunday June 13, for participants who sign up for both weeks of work.

### **Field Equipment**

PCRG will provide all equipment. Session 2 participants should bring standard survey gear--a day pack, 3-4 water bottles, sturdy hiking shoes, hat, sunscreen, and so forth.